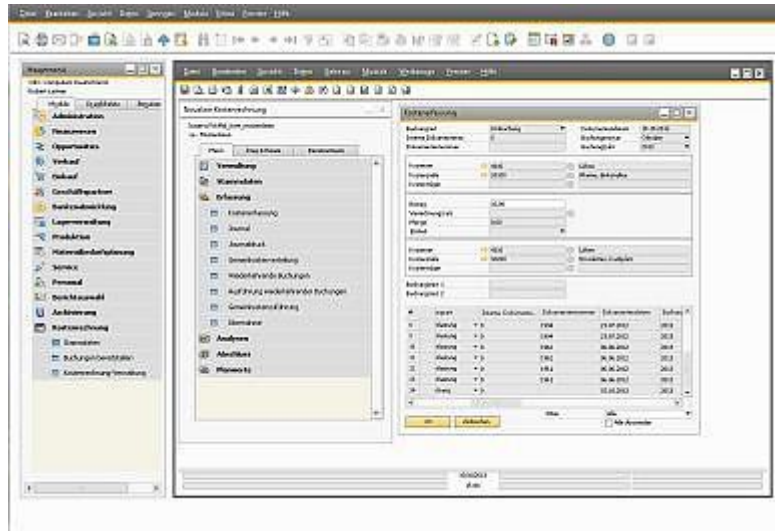


# ■ Cost Accounting.One ■

**Complementary SAP® Business One solution for complex cost centre and cost unit accounting for industry and commerce.**



## Overview

Very often it helps to provide that little extra in addition to general accounting and asset accounting, particularly for smaller businesses. Such as the Profit Centre Accounting solution, for instance, which is integrated in SAP Business One.

What to do, however, when the requirements are more a case of "Budgeting", "allocation of overheads", "internal cost allocation" and/or "cost unit accounting"? Or when services received are to be offset against costs? If this is the case, then a professional cost accounting solution such as our Business One Add-on „Cost Accounting.One“ is a necessity!

The fields "Profit centre" and "Project", which already exist in Business One, are additionally interpreted as "Cost centre" and "Cost unit" respectively. This means that the possibilities and analyses, already available in Business One, remain untouched. At the same time, these items help in the processing of cost accounting. Here you can carry out supplementary postings, set up rules for overhead distribution, add data from Novaline Payroll.One and, for example, create expense distribution sheets.

All in all, a "proper" cost and performance accounting tool!

- Transfer of postings from SAP Business One
- User orientated and flexible layout
- Internal cost allocation
- Overhead cost allocation resp. distribution
- Overhead cost allocation at overhead cost centre
- Budgeting of standard costs per cost centre and cost unit
- Cost element, cost unit, cost centre, cost type
- Data-export functions
- Data Archiving in accordance with GoBD\* which is only valid for use in Germany

\* basic principles to access data and to check digital papers



## ■ Cost Accounting.One Features ■

### General

- Client: Client: Windows 8.1®, 10®, 11®
- Server: Windows 2012®, 2016®, 2019®, 2022®
- Databases: MS SQL-Server 2014®, 2016®, 2017®, 2019®
- Multiusing, Multitasking / database-oriented
- Network-compatible
- Microsoft Office compatible<sup>1</sup>
- multi-client capable for up to 9,999 companies
- Data Archiving in accordance with GoBD (only valid for use in Germany)

### Cost Centre Accounting

- Cost centre category: primary cost centres, service cost centres (auxiliary plants), overheads cost centres, accumulative cost centres for cost analysis of various enterprise areas and the company as a whole
- Cost centre overviews on screen with balances for the period and single overviews
- Cost elements with parameters for cost centres and cost units, profits and cost allocation, administration of quantities and single printing
- Cost types for computation of total cost elements
- Subtotals to consolidate cost types
- Option to save fixed recurring postings
- Import of data from SAP Business One and Novaline Payroll.One
- Data transfer from third-party software (ASCII)
- Cost centre lists / cost type lists and boss lists can be selected
- Analyses of cost centres, cost elements, cost types, cost type subtotals and single printings
- budget values
- Allocation cost elements with any number of allocation rates per cost element and splitting to counter-cost element, cost centre and cost unit
- Option to save fixed recurring postings and automatic execution
- Book entry system for debit and credit postings as well as re-postings
- Allocation between primary cost centres and service cost centres (auxiliary plants), secondary and overhead cost centres

### Overhead Distribution for Cost Centres

- Up to 99 cost distribution rates per overhead cost centre
- Distribution in up to 9 allocation categories
- Allocation base parameters = cost elements, cost types, subtotal cost types
- Differentiation between outgoing and receiving cost elements

### Allocation Procedure

- Dynamic overhead cost allocation with periodical allocation of total overheads
- Static percentage allocation with debit and credit balance administration
- Fixed amount allocation with variable reference values
- Cost allocation of quantities incurred (e.g. hours) with fixed overhead rates and back calculation of over- and under-coverage
- Switch of allocation procedure for each distribution rate

### Acceptance Areas For Overhead Distribution (optional)

- Selection of cost centres
- All primary and service cost centres

### Cost Unit Accounting

- Types of cost units: primary cost units, accumulative cost units for departmental, area and enterprise assessment and the structure of hierarchies
- Automatic supply of costs and profits by cost-element controlling
- Transfer of data from SAP Business One and Novaline Payroll.One
- Book entry system for debit and credit postings as well as re-postings
- Cost unit list with cost centres
- Analysis using cost groups
- Budgeting using planned/actual comparison
- Overhead distribution for cost units
- Redistribution procedure as with the cost centres

<sup>1</sup> = Certified Microsoft Partner

© = Registered trademark of the Microsoft Corporation

Valid from: 03/2022

We look forward to hearing from you:

Novaline Informationstechnologie GmbH

Birkenallee 177

48432 Rheine, Germany

MD: Horst Ramnitz, municipal court Steinfurt, HRB 4446

Phone: +49 (0) 5971 - 8680

Fax: +49 (0) 5971 -868290

Mail: info@novaline.de

Web: www.novaline.de

