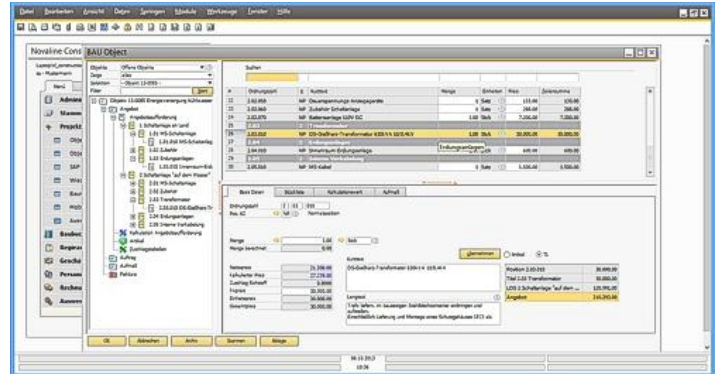


Construction.One

An SAP® Business One add-on for handling construction estimating and accounting.



Overview

Construction.One is an add-on solution for SAP Business One designed for industrial and plant construction as well as building industry to manage comfortably specifications of quantities and prices.

In particular, this includes the estimation calculation of bids (construction site costs), quotation processing, quantity measurement, construction accounting settlement (partial and final invoices), and project-specific target/actual comparisons.

Construction.One implies that it is no longer necessary to maintain a comprehensive master database, as business partner information and article master data can be transferred from SAP Business One - only construction-specific information needs to be added.

Business One offers extensive functions for the management of article-specific tasks, such as direct cost billing (article billing), warehouse management and procurement, as well as for financial and asset accounting and customer and supplier relationship management (CRM).

For requirements above and beyond this range of services, a comprehensive program library makes the offering into a complete package for the construction industry. This includes an advance payment accounting, cost and service accounting and an extensive archiving system for data, documents and e-mails.

Voluminous data (e.g. available via DATANORM/Excel) can be administrated in a separate database of articles.

- GAEB interfaces (data type 81-86), DATANORM, ELDANORM, 123 erfasst
- Extensive quotation entry with fixed prices, cost groups and calculation by bill of material
- Cost estimation by surcharge on overheads, general business expenses, risk and rewards
- Quantity measurement (free measurement/ formulas)
- Invoicing by positions, measurement sheets, lump-sum
- Service / Maintenance
- Extensive overviews (calculation list, calculation of final values, material extract, requirement list)
- Accounting of scheduled works
- Builders Diary Nominal/actual value comparison/
- Tender / price comparison list / placing
- Sub-contract comparison



■ Construction.One Features ■

General

- Client: Windows 8.1[®], 10[®], 11[®]
- Server: Windows 2012[®], 2016[®], 2019[®], 2022[®]
- Databases: MS SQL-Server 2014[®], 2016[®], 2017[®], 2019[®]
- Microsoft Office compatible
- Network-compatible
- Multi-company capability for up to 9,999 companies

Company Master Data

- Field labels for individual customer and supplier information
- Discount management for customers and suppliers
- VAT tables
- Units of measure, cost groups, primary material groups, material groups, article groups, work groups

Article Master Data

- Short text, long text
- Price calculation via material groups or cost groups for list price
- Discount groups
- Purchase price, delivery price, calculation price, net sales price, gross sales price
- Man-minute allocation
- Automatic data balancing SAP B0/Construction.One

Business Partner Master Data

- Data balancing with SAP Business One for customers/suppliers

Basis of Calculation

- Calculation in minutes or hours
- Computation of wage rate via form
- Calculation of contribution margin
- Cost group surcharges for overheads, general business expenses and risk/reward per cost group
- Free composition of forms for all applications, e.g. calculation of overheads, calculation of hourly equipment rates, calculation of wage rates and similar applications
- Detailed calculation over bill of materials
- Calculation by surcharge

Quotation Entry

- GAEB data type 81-86 read and write
- GAEB formate: 1990, 2000, XML

© = Registered trademark of the Microsoft Corporation

Quotation Printing

- Flexible print options
- Individual design using report generator (precondition: usage of Crystal Report)

Tender / price comparison list / placing

- Floating of tenders
- Sub-contract comparison

Order Management

- Transfer of article related positions to SAP Business One for procurement

Measurement

- Free text using the four basic arithmetic operations and parenthetical expressions
- Text entry via measurement form
- Formula calls for calculation
- Item-based calculations with transfer to settlement
- Paste, copy or cut lines
- Measurement by positions, by measurement sheet or partial statement flag

Accounting

- Automatic accounting based on quotation or measurement
- Credit notes
- Inclusion of discounts entered in the system
- Accounting of scheduled works
- Builders Diary (Nominal/actual value comparison)

Interfaces

- GAEB (DA 81-86)
- Database of articles (e.g. DATANORM 4.0/5.0, ELNANORM, Excel)
- 123 erfasst
- DATEV
- Financial Accounting by SAP B1
- Novaline Fibu.One, Kore.One, Archiv.One

Modules

- Measurement according to REB VB 23.003 (Edition 1979) incl. data medium exchange (DA11)
- Database of articles

Valid from: 03/2022

We look forward to hearing from you:

Novaline Informationstechnologie GmbH
 Birkenallee 177
 48432 Rheine, Germany
 MD: Horst Ramnitz, Steinfurt Local Court, HRB 4446

Phone: +49 (0) 5971 - 8680
 Fax: +49 (0) 5971 - 868290
 Mail: info@novaline.de
 Web: www.novaline.de

